



FAQs

*Get the answers to all your burning questions,
right here*

*Satisfy your curiosity – see our users' most
Frequently Asked Questions – Answered!*

A **type3** Solution

Basics

1. Whom is this 3D jewelry software created and designed for?

3DESIGN was developed for creators, independent designers, retailers, manufacturers, marketers, advertisers, sales reps, and managers. It is a collaboration tool which, when used internally, allows you to know at any moment what the company's products and projects are. Moreover, it is an excellent technology learning tool.

2. How can I discover the software before buying it ?

You can register on our website at: www.3design.com to get a demo customized to your speciality and needs.

3. Does 3DESIGN run on PC? Mac? Linux?

Yes, 3DESIGN runs on PC. Versions for Mac and Linux are available on demand.

4. What are the minimum configuration requirements for 3DESIGN?

The recommended configuration is as follows:

- Pentium IV 3.8 GHz processor
- RAM Memory 2 GB
- Free disk space 10 GB
- Screen (resolution : 1280*1024 / 16 millions colors)
- USB Port
- Video card: NVIDIA GeForce 7900 GT (256 MB) / ATI Radeon X1900 GT(256 MB)
- mouse 2 buttons with wheel
- Connexion Internet (update)
- **Network card must be activated**

5. What languages does the software come in?

3DESIGN and all support materials are available in:

- English
- French
- Spanish
- Italian
- Chinese
- Korean
- Hungarian
- Japanese
- Czech.



David Watt

1st steps

6. Are my TypeEdit files compatible with the software?

Yes, TypeEdit files are compatible with 3DESIGN thanks to VNX, the exchange format. Even better, you can simply copy and then paste your files directly into 3DESIGN. Because we have been working with the jewelry industry for many years, we wanted to make it simple for users who wished to work with our complementary Type3 solutions.

7. What kind of files can I import/export?

You may import files under a variety of formats: **Step Sat, IGES, Rhino, STL, EPS, PNG**, etc. And you may also export files under formats such as: **STL, SAT, JPEG, Rhino, PNG**, and much more.

8. What are the outputs available in 3DESIGN?

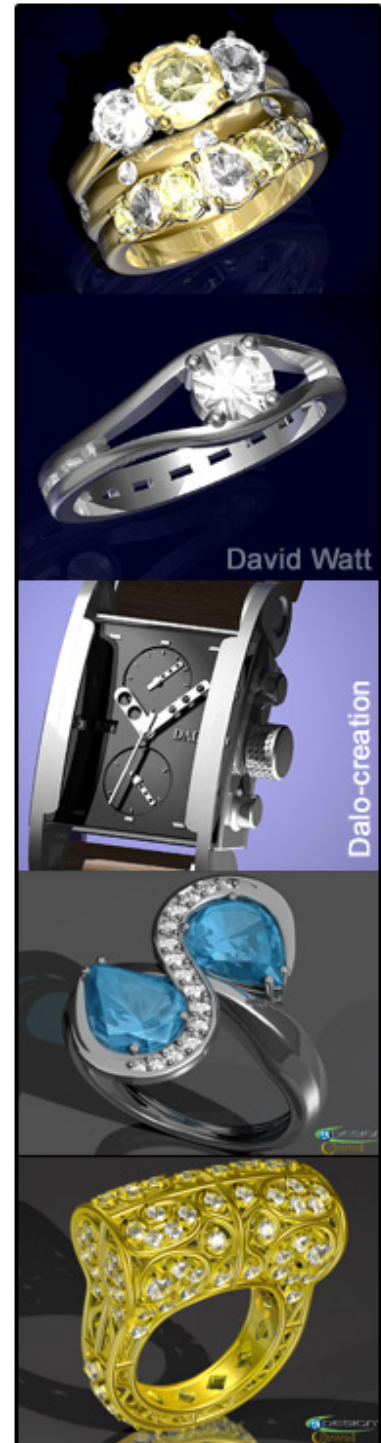
The manufacturing options are the mechanical method or the rapid prototyping method (stereolithography machines). Manufacturing can be done on rotary machines in 3, 4 or 5 axes with your choice of CAM software. Prototyping, regardless of the method is the most adapted. Moreover, any kind of prototyping machine can be installed with 3DESIGN> jewel thanks to its quality STL.

9. What is the quality of the STL output?

You will be surprised by the high quality results you will achieve in rapid prototyping with 3DESIGN. STL files are directly handled by 3DESIGN, ensuring the most precise result for your creations.

10. How can I create pieces in 3DESIGN?

Various options are offered. First you can use the **Draft Kit function** and build your piece based on your 2D sketches. Another possibility consists of constructing your jewel by simply **assembling components from the catalog**. Last, but definitely not least, you can **freely create** a jewel using 3DESIGN advanced functions and wizards.



Creation modes

11. Is there a component library in 3DESIGN?
 Yes. We developed a real catalog with a variety of libraries. Libraries include stones, settings and rings and can be fully customized. Store your own creations and organize them exactly as you wish. The catalog allows first-time users to be productive immediately, and you can even create a library and share it on your company's network.

Last minute! 3DESIGN now incorporates **Swarovski's Crystal Fashion Components** in its library. Create the most exquisite and original designs with these unique stones.

12. Can I modify and resize the catalog's components?
 Yes, you can modify and resize any of the components. This flexibility gives the designer total creative freedom.

13. What materials are available in 3DESIGN? Can I create new ones?
 All standard materials are available in 3DESIGN: gold, silver, platinum, diamond, emerald, sapphire, ruby, some woods, etc. It is also possible and very simple to create new materials and stones and save them in your catalog for your next creation. This capability reinforces the Ray-Tracing module's power and offers you endless customization possibilities!

14. Can I still start my design with a 2D sketch?
 Yes, and the process of using traditional sketches as a basis is very simple. Use the Draft Kit function to scan and retrieve your 2D sketch and then start building your piece in 3D using the 3 views as a reference. In a few clicks your design becomes a real 3D object!



Dalo-creation

Professional tools

15. Can I model a range of rings with different ring sizes? How do I proceed?

To make designers' lives easy, 3DESIGN created an automatic Ring Wizard. Simply choose your country's standard for the ring size (USA, Europe, United Kingdom, Japan or customize your own) and choose the ring size itself. The software then automatically executes and calculates your data and the ring is just as you want it.

16. Can I determine the weight of the piece I am creating? Can I impose weight restrictions?

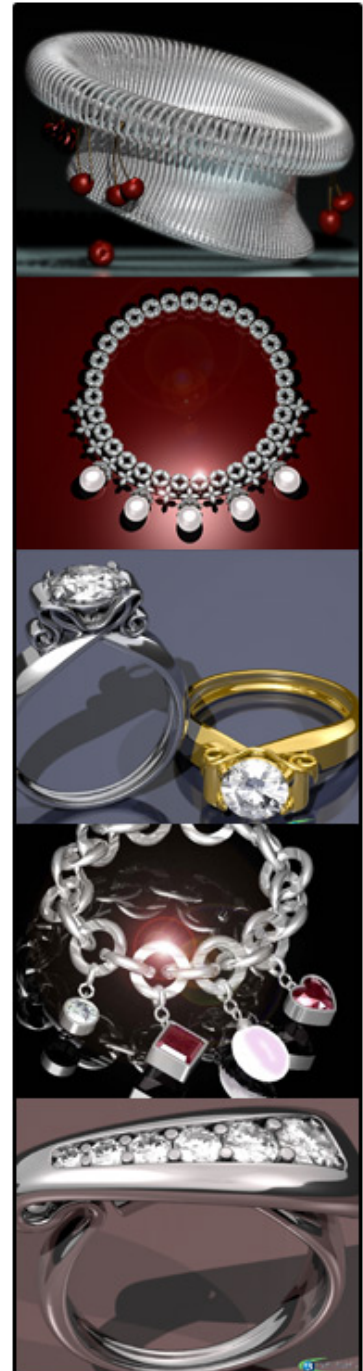
Yes, 3DESIGN provides a specific tool for this purpose. It allows you to determine the weight of the piece you are creating, at any moment. Plus, the user can impose weight restrictions on the piece; a warning sign appears if the weight exceeds expectations.

17. What is Ray-Tracing? How is it different from shading?

No need to choose between the two; 3DESIGN offers you both. Shading allows a realistic rendering of the materials and stones, but the Ray-Tracing function goes further. Beyond delivering a beautiful quality, the Ray-Tracing function offers you a host of options to enhance your design such as lighting effects, background scenery, transparency, etc. Your renderings thus become true promotional and marketing tools.

18. How can I share my creations and request my customers' approval?

3DESIGN offers you an array of capabilities to share your creation at any step of the construction process. Save your design as a file using one of the many formats available (JPG, PNG, BMP, etc.) or create a movie using the video maker. This new function allows you to share the complete construction of your design or only part of it. Obtain your partners and customers' approval in a snap!



How to

19. It is possible to work with different views at the same time?

Yes, it is possible and sometimes recommended to work with different views of your piece at the same time. You can split the work area into as many as four different views.

20. How does the parametric construction tree work? Why is it so useful?

The construction tree is the memory of all the operations and functions the user used to create his piece. It is the key difference between 3DESIGN and other jewelry software. If you decide to do the same job on another scale, using a different material, or with the slightest modification in detail, you will just have to "replay" the construction method and your original creation will appear modified according to your wishes. All you have to do is make the desired modifications. At any moment, you can go back, re-edit an operation, change an element or dimension, make a distortion, etc. With just a few clicks, you can create a whole jewelry range. This "Parametric Construction Tree" is the memory of all the steps in all dimensions. The entire procedure is saved: just "replay".

21. How can I position stones on a piece of jewelry?

3DESIGN functions allow the precise positioning of stones, as well as settings and ornaments with openwork thanks to the Jeweling and Pearling functions.

22. Can I manually modify the objects created?

Yes, 3DESIGN offers you a variety of functions for manually altering the surfaces of your objects. Distortion tools, among others, are at your disposal, and each new object can be saved in your customized catalog. Use your imagination with this incredible function!



Little help

23. How can I learn to use 3DESIGN? How long will it take to master it?

3DESIGN is a simple software, dedicated to the jewelry industry with highly specific functions. It is clearly a designing tool, and its power, user-friendliness and real-time realistic rendering afford you unlimited creative freedom. The different demos and tutorials that come with 3DESIGN allow the user to become proficient in the software very quickly.

Within a few hours the user will be competent enough to create a jewelry piece from start to finish. Within days, he or she can create all the jewelry basics.

With a three-day training session users easily become experts.

24. Are tutorials available?

Yes, 3DESIGN comes with nine detailed tutorials as well as demos to help you rapidly get used to the software.

25. Is Online Help available?

Yes, Contextual Online Help is available at any time. Simply hover your mouse over an icon or an element of your jewelry piece, and an online help paragraph automatically appears.

26. How can I update my software?

Through the Internet, updates occur automatically every time you launch the software. Plus, you don't lose time downloading since 3DESIGN only updates new features.

27. I didn't plan a new expense now but I want to start working with 3DESIGN; what can I do?

it's possible to get a leasing offer with low monthly payments. Please contact your local reseller.

